

BackUPS Pro Range

Introducing APC BackUPS Pro range with stunning looks and class leading features like LCD screen and Green features

BR1500G-IN, BR1000G-IN, BR24BPG-IN



APC BackUPS Pro range offers great new features that no other UPS offers today

- > Easy to understand LCD Screen
- > Great looks
- > Green features - saves electricity
- > Capacity to add a XL battery pack
- > PowerChute 3.0 Software
- > 6 Indian sockets

BackUPS Pro Features

LCD Screen

LCD Screen that is easy to understand. Now its easy to check the UPS parameters. Displays

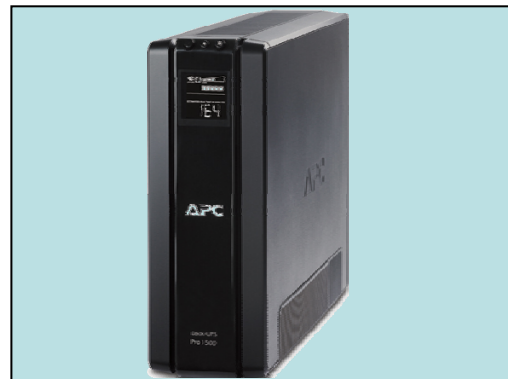
- > Sensitivity setting
 - > Battery Charge
 - > Power Saving function on/off
 - > On-Line / On Battery
 - > Replace Battery
 - > Overload
 - > AVR
 - > Input / Output Voltage
 - > System Faults
 - > Mute On/Off
 - > Load in Watts & Percent



Great looks

With its stunning looks it is sure to win a lot of admiration.

- > For once you can now showoff your UPS



Green Feature

Programmable master outlet controls the slave outlet and switches off the load on slave outlet if the master goes in hibernation

- > Saves upto INR2000 in electricity bill every year

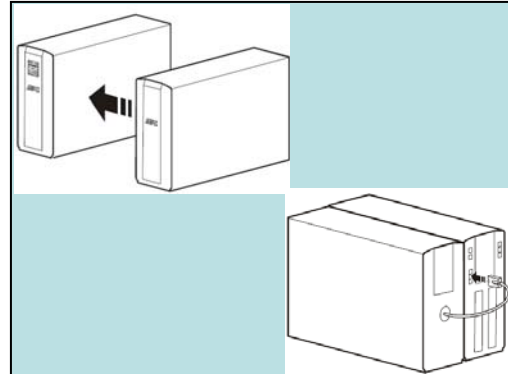


BackUPS Pro Features

Capability to add XL battery pack

Enhance runtime by adding BR24BPG-IN battery pack.

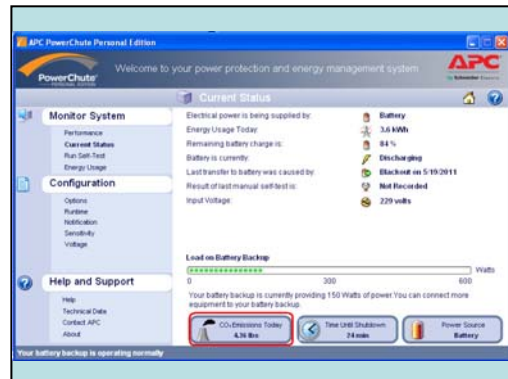
- > 9Ah x 4 Battery in the battery pack
- > Sold separately



PowerChute 3.0

Great new software that does more than just switching off the PC

- > Know your energy consumption
- > CO2 emission – knowing it is the first step to controlling it



6 nos 3 pin Indian Outlets

- > 4 Battery backed sockets
- > 2 Surge only sockets
- > Standard Indian 6A sockets



Specifications

Model	BR1000G-IN	BR1500G-IN
VA	1000 VA	1500 VA
Maximum Load	600 W	865 W
Nominal Input Voltage	220 Vac-240 Vac	
Online Input Voltage Range	170 Vac to 294 Vac	
Automatic Voltage Regulation	182 Vac-216 Vac +17% 252 Vac-282 Vac -17%	
Frequency Range	50/60 Hz \pm 1 Hz	
On-battery wave shape	Step-approximated sine-wave	
Typical Recharge Time	8 hours	
Transfer Time	10 ms, maximum	
Operating Temperature	0° to 40° C (32° to 104°F)	
Storage Temperature	-5° to 45° C (23° to 113° F)	
Unit Dimensions	30.1 × 11.2 × 38.2 cm (11.9 × 4.4 × 15 in)	
Unit Weight	12 kg (26 lbs)	
Interface	Serial, USB	

APC India
4th Floor, Electra, Wing 'B'
Exora Business parks
Marathahalli,
Sarjapur Outer Ring Road,
Bangalore - 560 103

APC Corporate
132 Fairgrounds Rd.
West Kingston, RI, 02892 USA

Customer Service:
Toll free (BSNL Network): 1-800-4254-272
All other networks: (add city code) 39022272

indiainfo@apc.com

www.apc.com/in

Business card scan
or partner logo here
(delete box if neither
of these is used)

APC[®]
by Schneider Electric